

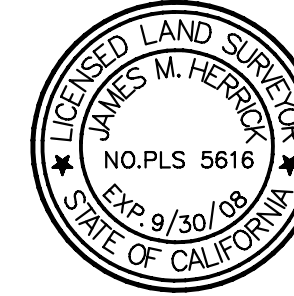
SCALE: 1" = 40'

### BASIS OF BEARINGS:

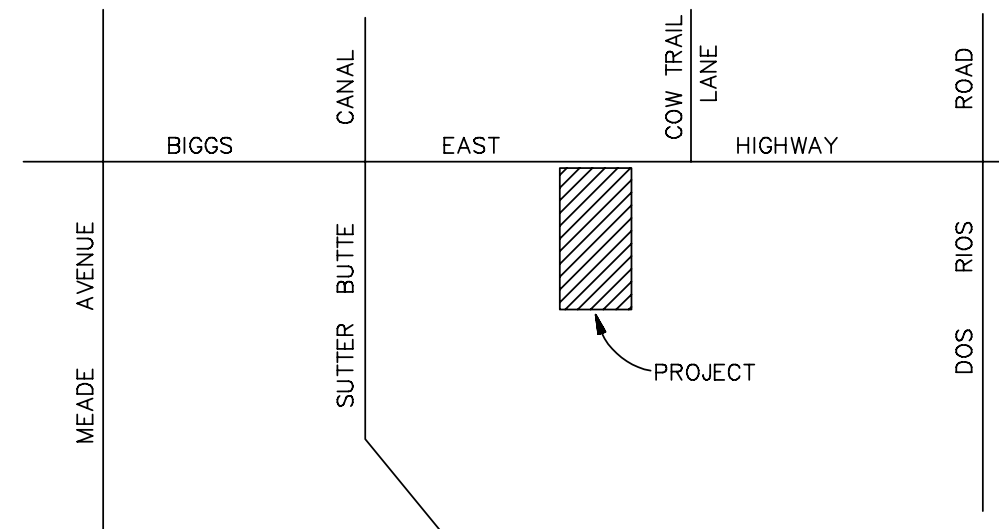
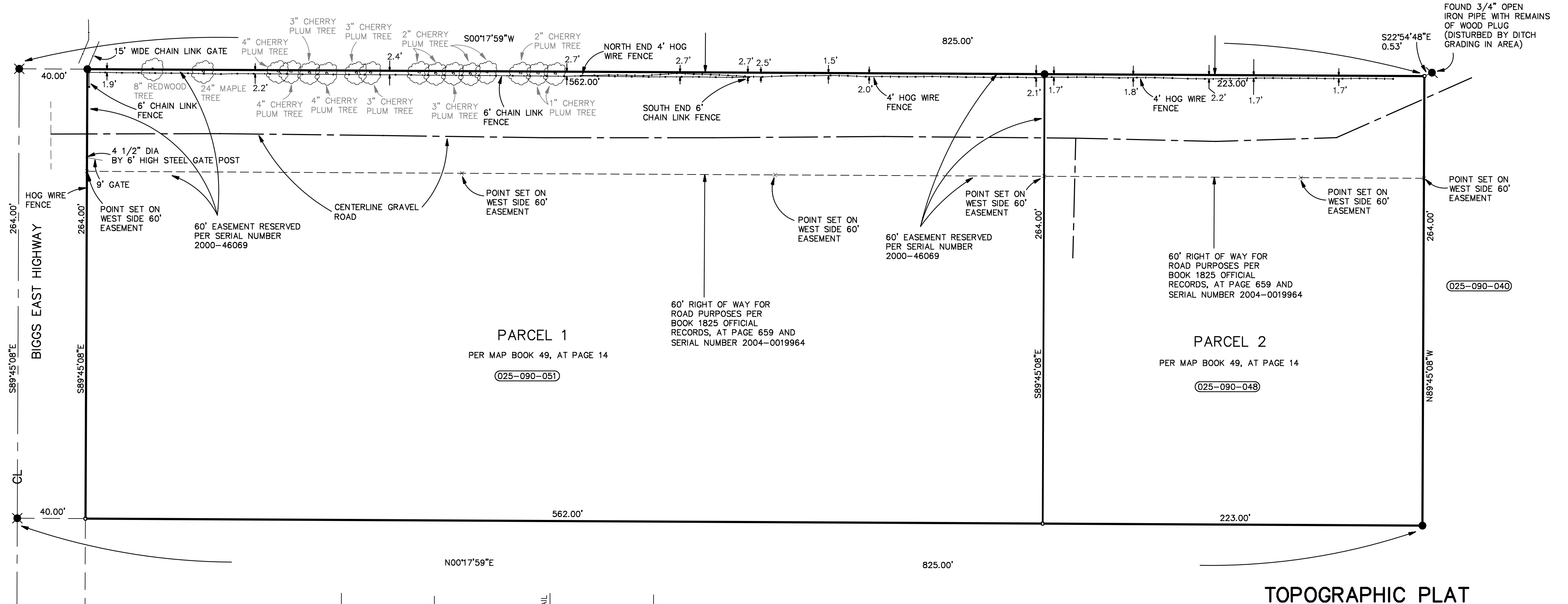
THE BASIS OF BEARINGS FOR THIS PLAT IS THE CENTERLINE OF BIGGS EAST HIGHWAY EVIDENCED BY MONUMENTS SHOWN HEREON AS FOUND. THE BEARING OF SAID LINE BEING S89°45'08"E PER MAP BOOK 49, AT PAGE 14.

### LEGEND

- FOUND SPIKE AND WASHER PER MAP BOOK 49, AT PAGE 14
- FOUND 3/4" IRON PIPE TAGGED RCE 14640 PER MAP BOOK 49, AT PAGE 14
- FOUND MONUMENT AS NOTED
- CALCULATED POINT NOTHING FOUND OR SET
- ②025-090-051 ASSESSOR'S PARCEL NUMBER



DATED: \_\_\_\_\_  
NORTHSTAR ENGINEERING  
JAMES M. HERRICK PLS 5616  
EXP. 9/30/08



LOCATION MAP  
NOT TO SCALE

- NOTE:
1. ALL DIMENSIONS SHOWN HEREON ARE RECORD PER MAP BOOK 49, AT PAGE 14.
  2. THE FIELD SURVEY WAS COMPLETED 11-13-2007

### TOPOGRAPHIC PLAT

FOR  
CHARLES SHEPPARD  
PARCELS 1 AND 2 AS SHOWN ON  
THAT CERTAIN PARCEL MAP FILED FOR RECORD  
ON FEBRUARY 11, 1974 IN MAP MAP BOOK  
49, AT PAGE 14 IN THE BUTTE COUNTY  
RECORDER'S OFFICE

COUNTY OF BUTTE - STATE OF CALIFORNIA

**NorthStar**  
**ENGINEERING**

CIVIL ENGINEERS \* PLANNERS \* SURVEYORS  
111 MISSION RANCH BLVD., SUITE 100 \* CHICO, CALIFORNIA 95926  
(530) 893-1600 FAX (530) 893-2113