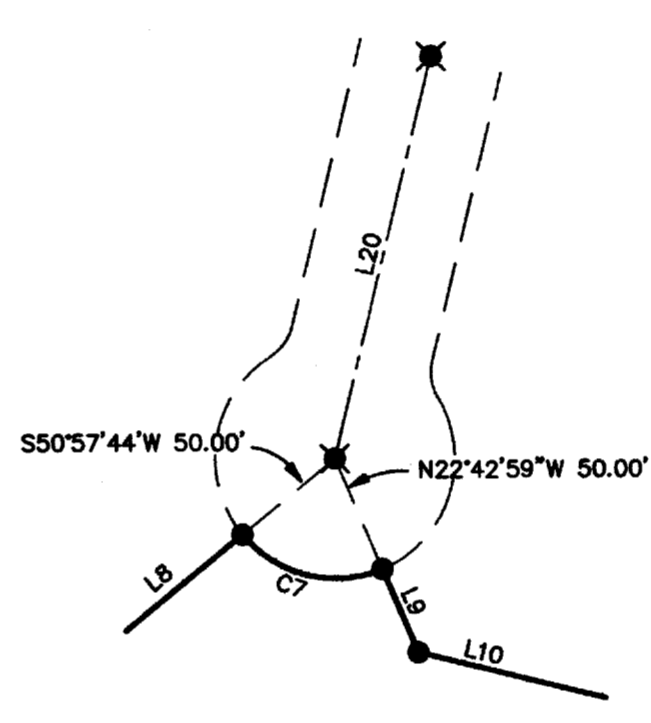


DETAIL "D"  
NOT TO SCALE



DETAIL "F"  
NOT TO SCALE

DETAIL "E"  
NOT TO SCALE

LINE	BEARING	LENGTH	
L1	S78°40'03\"/>		

CURVE	RADIUS	DELTA	LENGTH	
C1	269.98'	27°05'41\"/>		

**LEGEND**

- FOUND 1/2" REBAR AND CAP RCE 24666 PER R1 OR AS NOTED
- FOUND 3/4" IRON PIPE LS 6373 PER R3
- FOUND SECTION CORNER AS NOTED
- ◆ FOUND QUARTER CORNER AS NOTED
- ▲ FOUND BUTTE COUNTY WELL MONUMENT PER R1
- ✱ FOUND RAILROAD SPIKE WITH PUNCH MARK PER R1
- SET 3/4" IRON PIPE TAGGED LS 5616
- CALCULATED POINT NOTHING FOUND OR SET
- M INDICATES MEASURED DATA THAT MATCHES RECORD DATA
- C INDICATES CALCULATED DATA THAT MATCHES RECORD DATA
- R1 RECORD DATA PER MAP BOOK 91, AT PAGES 63-66
- R2 RECORD DATA PER MAP BOOK 129, AT PAGE 82-83  
NOTE: R2 DISTANCES SHOWN HEREON ARE GRID DISTANCES. TO OBTAIN GRID DISTANCES DIVIDE GROUND DISTANCES SHOWN ON R2 BY 1.0000653
- R3 RECORD DATA PER MAP BOOK 173, AT PAGE 40  
NOTE: R3 DISTANCES SHOWN HEREON ARE GRID DISTANCES. TO OBTAIN GRID DISTANCES DIVIDE GROUND DISTANCES SHOWN ON R3 BY 1.0000653
- R4 RECORD DATA PER MAP BOOK 106, PAGE 54. DISTANCES ARE ASSUMED TO BE GRID.
- ( ) EMBRACES RECORD DATA OR CALCULATED AND/OR MEASURED DATA THAT MATCHES RECORD DATA

**NOTES:**

1. DEED BOOK 83, PAGE 238 PROVIDES FOR RIGHTS OF WAY THAT ARE NOT DESCRIBED OF RECORD.
2. DEED BOOK 108, PAGE 338 PROVIDES FOR EASEMENTS FOR ROAD, POLE LINE, DITCH AND FLUME LINE. NO DESCRIPTION IS GIVEN.
3. DEED BOOK 118, PAGE 388 PROVIDES FOR A DITCH EASEMENT. NO DESCRIPTION IS GIVEN.
4. DEED BOOK 163, PAGE 21 PROVIDES FOR A CANAL EASEMENT. NO DESCRIPTION IS GIVEN.
5. OFFICIAL RECORD BOOK 551, PAGE 61 PROVIDES FOR A RIGHT OF WAY FOR A ROAD. THIS RIGHT OF WAY DOES NOT APPEAR TO FALL ON THIS PARCEL.
6. OFFICIAL RECORD BOOK 1124, PAGE 358 PROVIDES FOR A 20' RIGHT OF WAY OVER A ROADWAY AS IS WAS LOCATED IN 1961. ROADWAY CAN'T BE LOCATED AT THE PRESENT TIME.
7. SN 91-45119 PROVIDES FOR A 15' STORM DRAINAGE EASEMENT THAT DOES NOT APPEAR TO FALL ON THIS PARCEL.

**RECORD OF SURVEY**  
 FOR  
**EAGLE MEADOWS OF PARADISE 320 LLC**  
 A CALIFORNIA LIMITED LIABILITY COMPANY  
 BEING A PORTION OF SECTION 31, TOWNSHIP  
 22 NORTH, RANGE 4 EAST, MOUNT DIABLO MERIDIAN  
 COUNTY OF BUTTE - STATE OF CALIFORNIA

**NorthStar**  
**ENGINEERING**  
 FEBRUARY, 2009

CIVIL ENGINEERS \* PLANNERS \* SURVEYORS  
 111 MISSION RANCH BLVD., SUITE 100 \* CHICO, CALIFORNIA 95926  
 (530) 893-1600 FAX (530) 893-2113  
 JOB NO. 9691 SHEET 2 OF 2

Book 178 Page 38